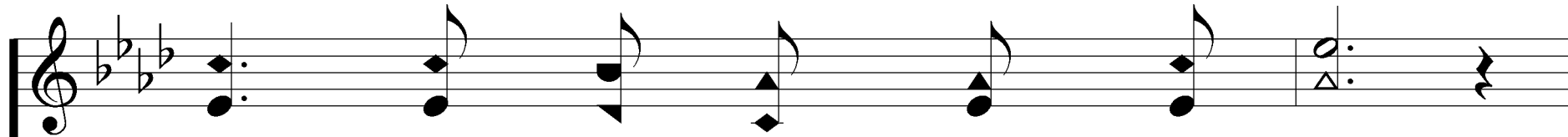
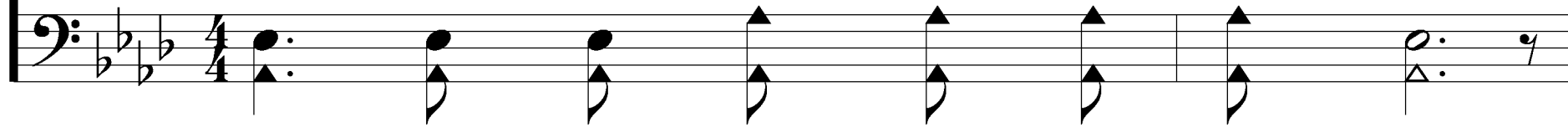


Hold To God's Unchanging Hand

249



1. Time is filled with swift tran - si - tion

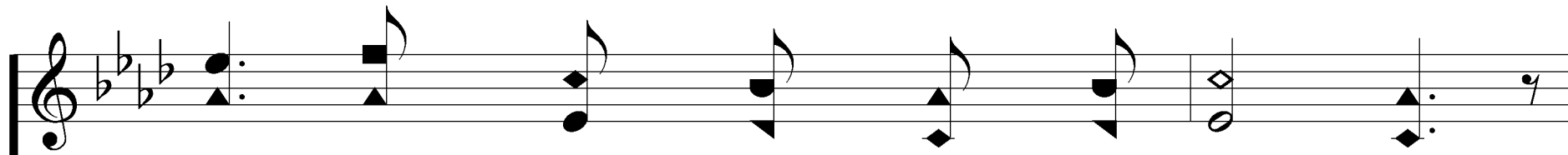


Naught of earth un - moved can stand

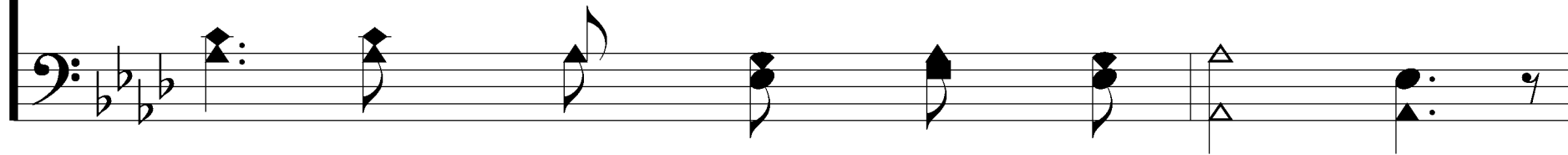


Hold To God's Unchanging Hand

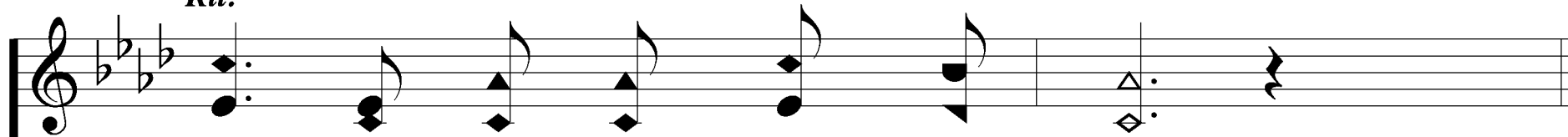
249



Build your hopes on things e - ter - nal,



Rit.



Hold to God's un - chang - ing hand.



You got - ta

Hold To God's Unchanging Hand

Chorus *p*

Hold to His hand to God's un - chang - ing hand!

Hold to His hand

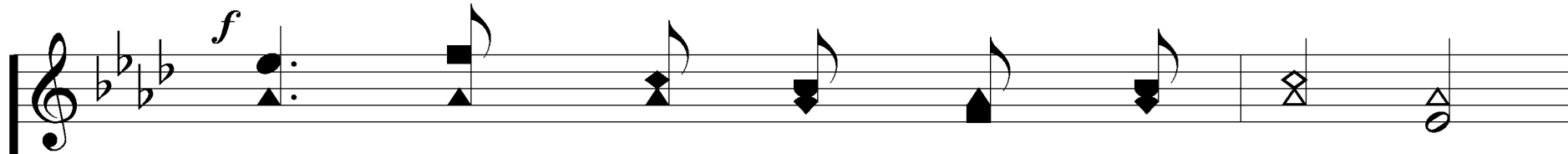
m

Hold to His hand to God's un - chang - ing hand!

Hold to His hand

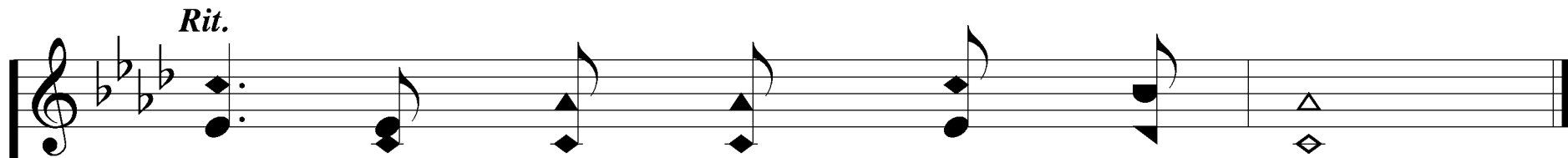
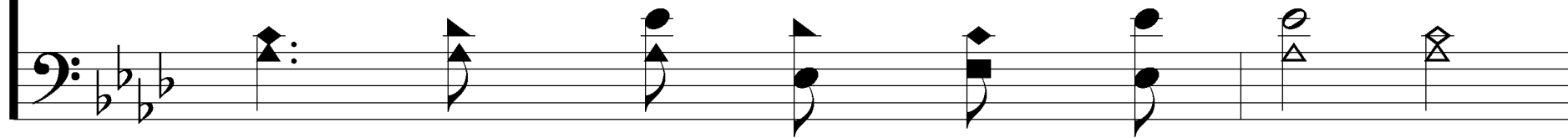
Hold To God's Unchanging Hand

249



f

Build your hopes on things e - ter - nal,



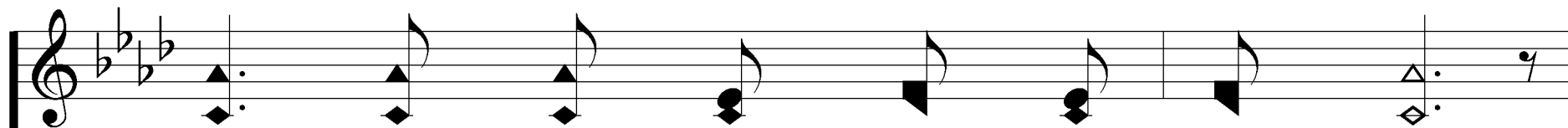
Rit.

Hold to God's un - chang - ing hand.

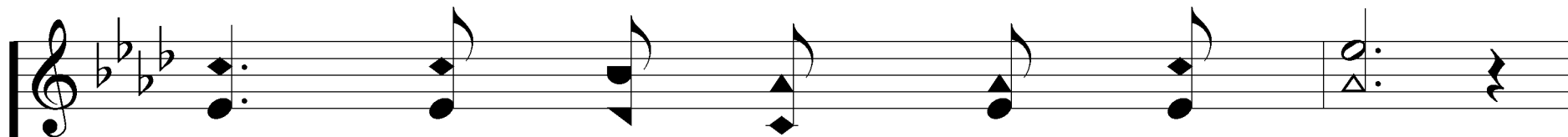
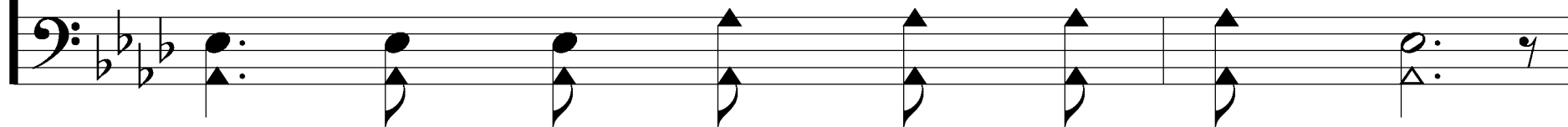


Hold To God's Unchanging Hand

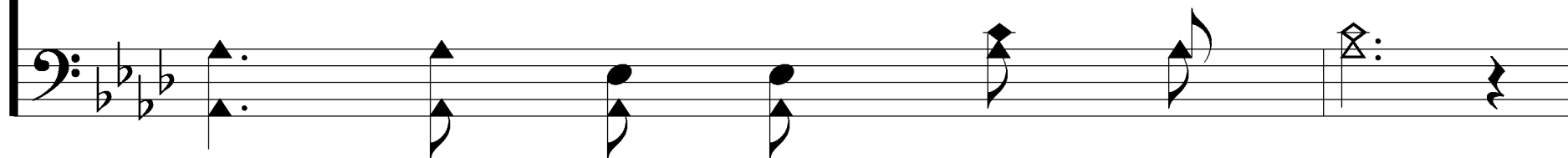
249



2. Trust in Him who will not leave you,

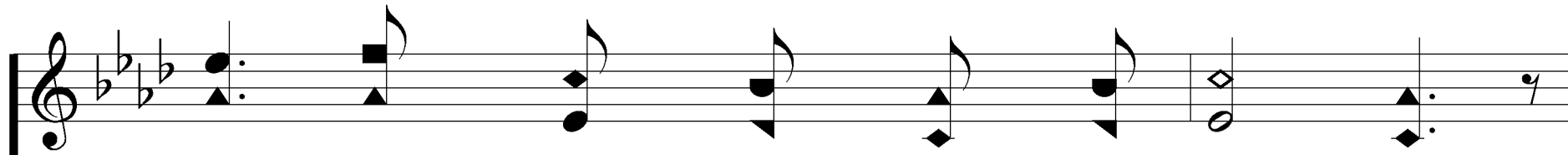


What - so - ev - er years may bring,

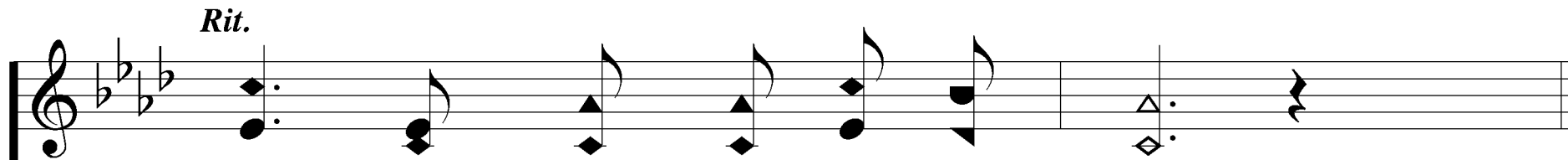
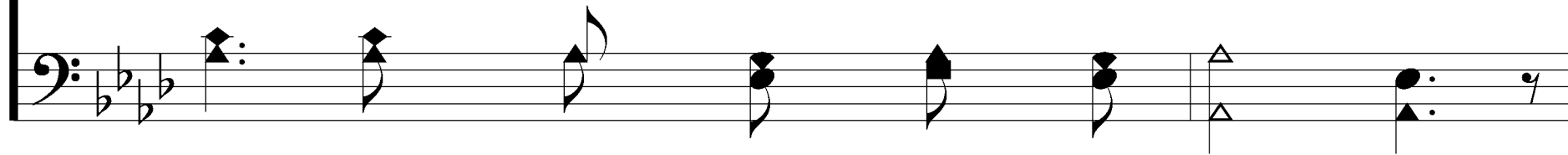


Hold To God's Unchanging Hand

249



If by earth - ly friends for - sak - en,



Still more close - ly to Him cling.



Hold To God's Unchanging Hand

Chorus *p*

Hold to His hand to God's un - chang - ing hand!

Hold to His hand

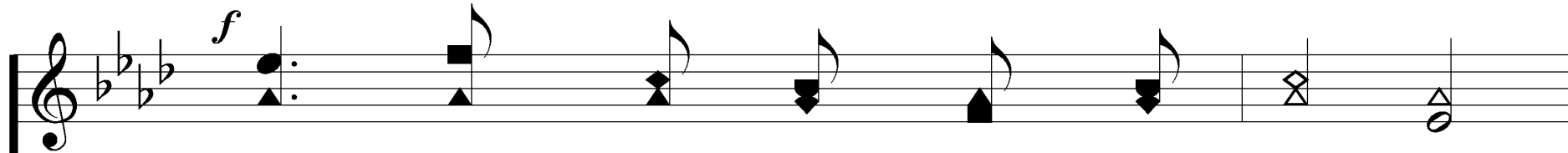
m

Hold to His hand to God's un - chang - ing hand!

Hold to His hand

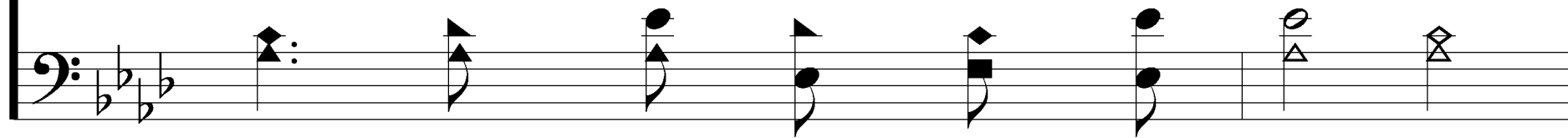
Hold To God's Unchanging Hand

249

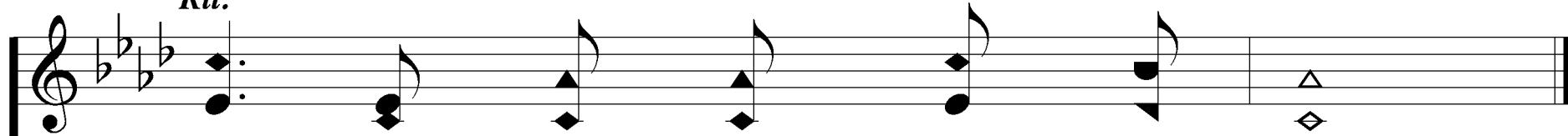


f

Build your hopes on things e - ter - nal,



Rit.

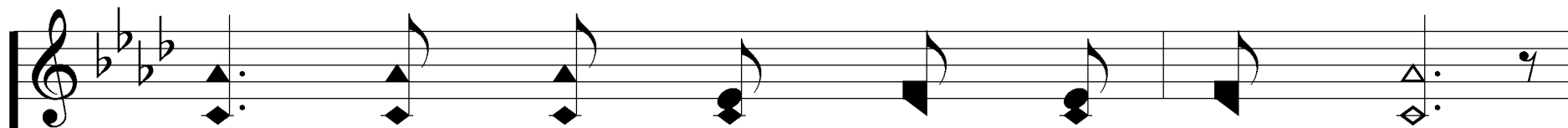


Hold to God's un - chang - ing hand.

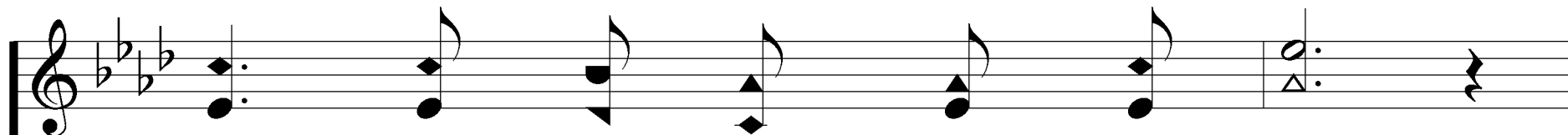
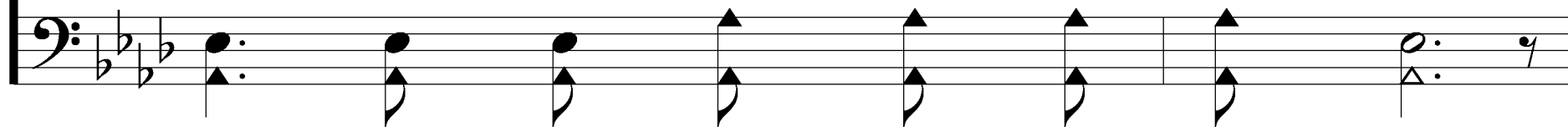


Hold To God's Unchanging Hand

249



3. When your jour - ney is com - plet - ed,

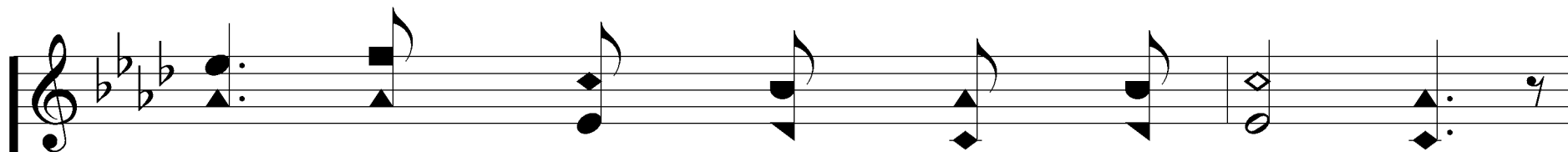


If to God you have been true,



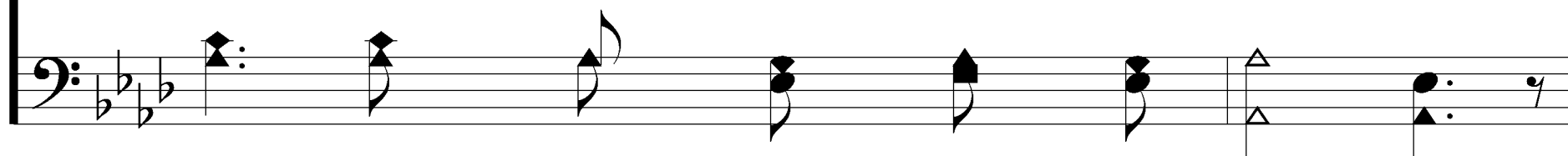
Hold To God's Unchanging Hand

249

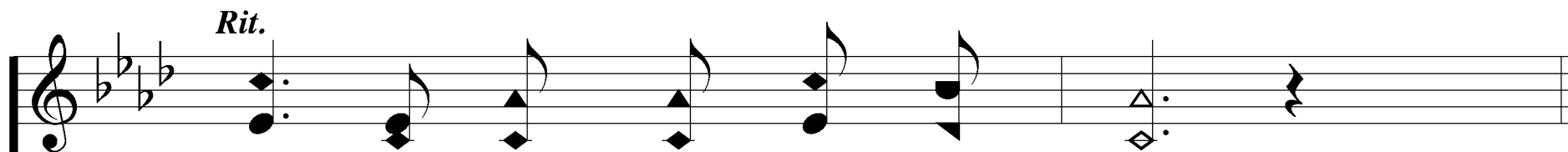


Musical notation for the first staff, treble clef, key signature of three flats, and common time signature.

Fair and bright the home in glo - ry

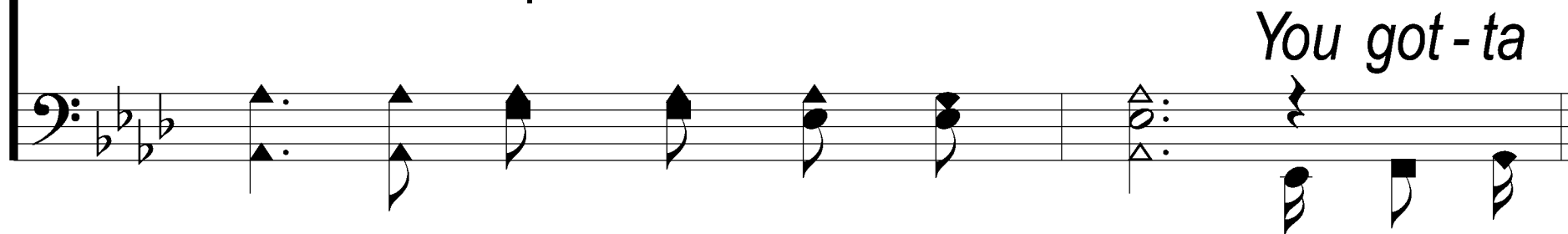


Musical notation for the second staff, bass clef, key signature of three flats, and common time signature.



Rit.
Musical notation for the third staff, treble clef, key signature of three flats, and common time signature, with a *Rit.* marking above the first measure.

Your en - rap - tured soul will view.



Musical notation for the fourth staff, bass clef, key signature of three flats, and common time signature, with the text *You got - ta* written above the final measure.

Hold To God's Unchanging Hand

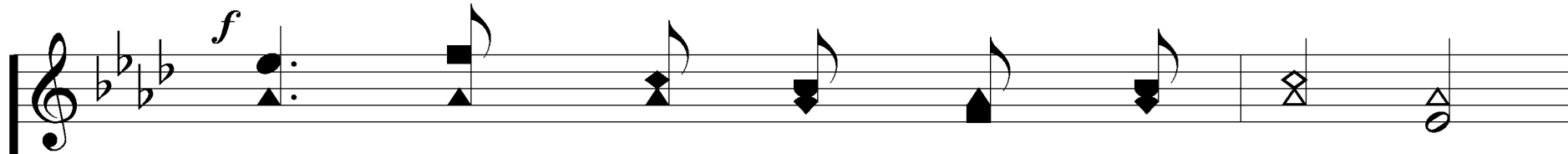
Chorus *p*

Hold to God's un - chang - ing hand!
Hold to His hand

m
Hold to God's un - chang - ing hand!
Hold to His hand

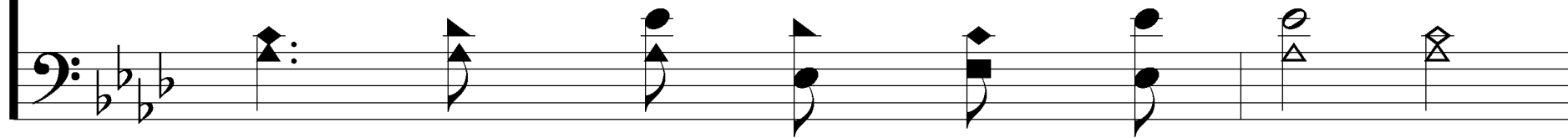
Hold To God's Unchanging Hand

249

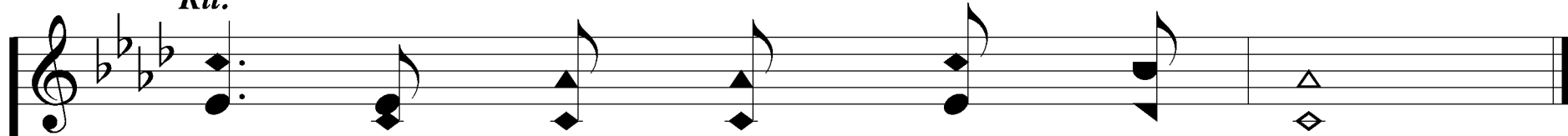


f

Build your hopes on things e - ter - nal,



Rit.



Hold to God's un - chang - ing hand.

